

Stöcklin CSR Report 2025

Shaping sustainability – acting today for tomorrow





“

To truly make a difference, we have to act. Lively. Intelligently. Together. For responsible solutions that we can all live well with tomorrow.

Jürg Frefel, Group CEO

Our planet - our responsibility

For us, sustainability starts where we can make an impact.

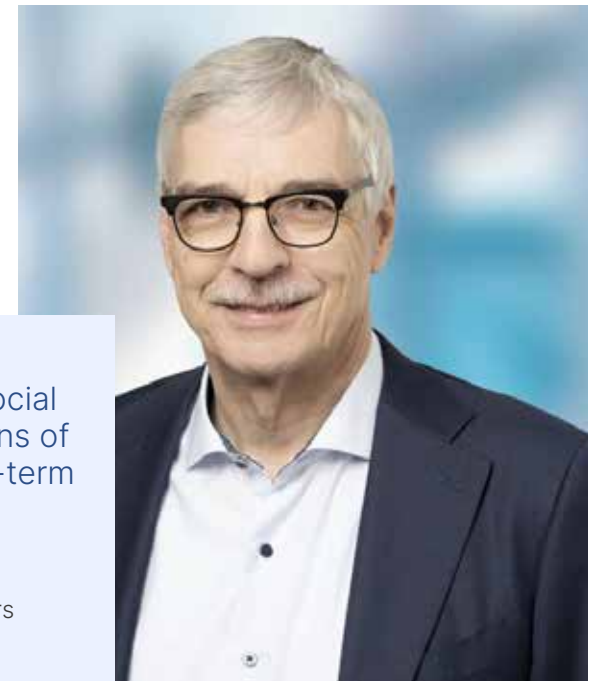
Recyclable materials, low-consumption local production, responsible supplier management: our processes, our products and our Total actions are geared towards the conscious and careful use of resources and our social environment. We rely on a sustainable infrastructure at our locations - with 2,250 photovoltaic modules, 60 geothermal probes, electromobility in our vehicle fleet, regional products in our staff restaurant, performance-optimized and energy-efficient production technologies and state-of-the-art office space.

We like to work with local suppliers and service partners, pay particular attention to resource efficiency in the development of our new products, choose environmentally friendly engineering and materials and Warranty transparent supply chains. We stand for low-emission automation - with intelligent Energy Management solutions for our AGV and forklift fleets (patented lithium-ion power pack, fast charging and standby functions); with energy recovery, IT-supported

journey optimization, adaptive dynamics and minimization of emission sound pressure in racking operation and Transport systems. This enables us to minimize energy losses in our plants - and help our customers reduce their CO₂ footprint in stock by up to 20 percent.

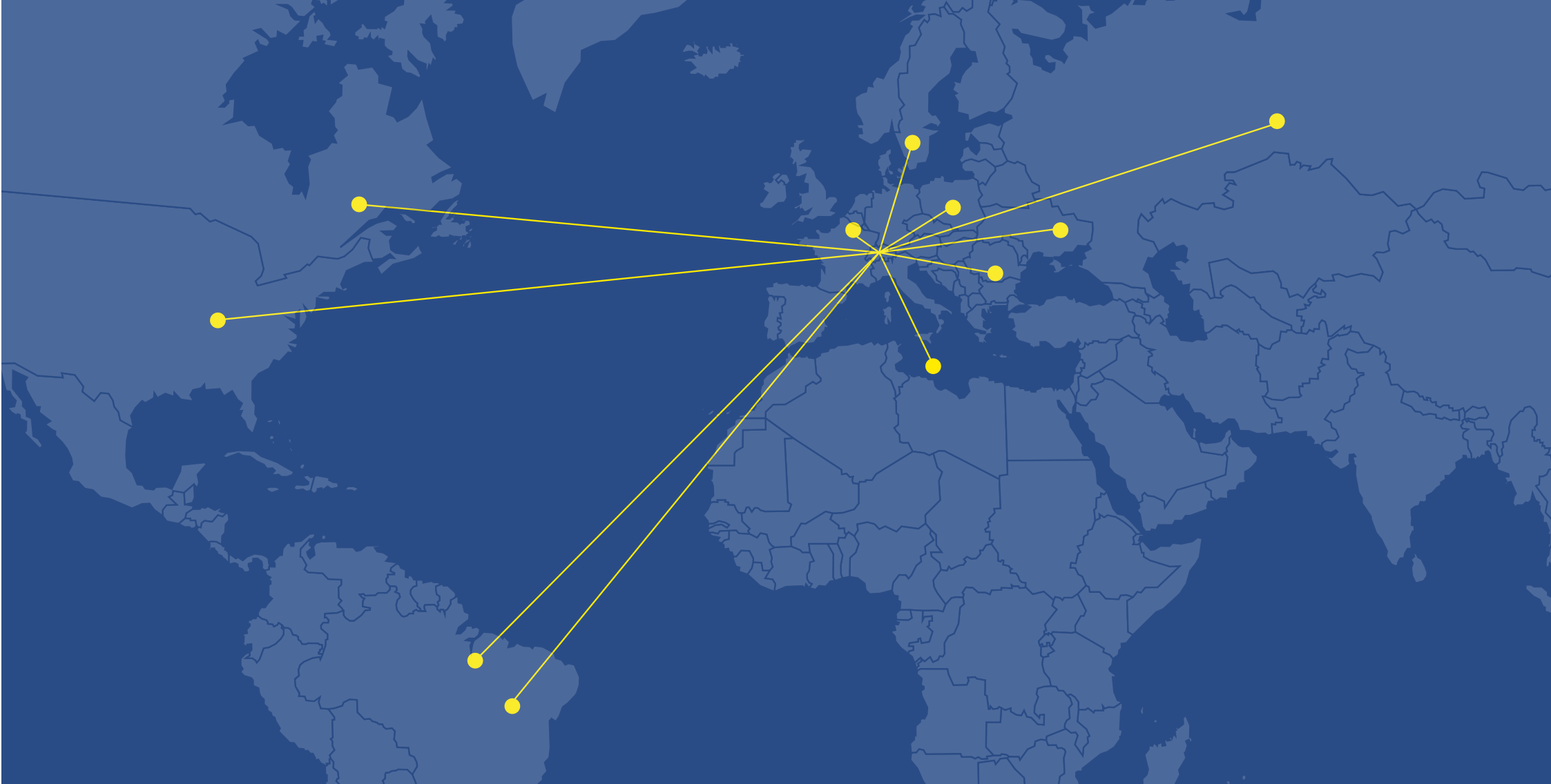
“As a family-owned company, we assume social responsibility - today and for the generations of tomorrow. Our actions are focused on long-term values and on actively helping to shape a sustainable future.”

Urs Grütter, Owner and Chairman of the Board of Directors of the Stöcklin Group





Stöcklin Group sees sustainability not only as an obligation, but also as an opportunity to actively and responsibly shape the future of intralogistics.



Company figures 2024

Number of
employees

570

Share of
renewable energy

87%

Turnover

124 Mio

Year of foundation

1934

Processed steel

1'895 t

Solidity as the foundation for a sustainable future

CH-Laufen, Headquarter

Branches

CH-Jona
CH-Kestenholz
DE-Netphen
DE-Trier
FR-Lezennes
NL-Hoofddorp
CZ-Zlín
SL-Ljubljana
MX-México City
US-Marietta

Partners

IT-Turate
GB-Aston OX
BR-São Paulo





Table of contents

10	STÖCKLIN GROUP - the company
20	Shaping sustainability - acting today for tomorrow
24	Our goals for the future
26	Sustainability - Mission statement for the future and Product cycle
43	Compliance - responsibility and integrity
44	Sustainable partnerships
45	Long service life for sustainable success
48	Conveying biodiversity
49	Sponsoring
50	Imprint

STÖCKLIN GROUP – the company

Stöcklin Group celebrated its 90th anniversary in 2024. Healthy growth confirms its success. In 1995, Urs Grütter took over the company as a mechanical supplier and successfully expanded it into an international intralogistics system provider with headquarters in Laufen (CH).

Consistently sustainable infrastructure: The Laufen Technology Center

In order to continue to make Stöcklin sustainably future-proof and drive digitalization forward, we invested in an innovative infrastructure with the New construction of the Technology Center in Laufen. We are thinking about the generation of tomorrow and saw the move to the future-oriented Engineering Center as a clear signal to our employees, according to our vision of continuing to grow sustainably in the future. After all, we can only grow if we have room for innovation and bundle all of our core competencies under one roof: Sustainable and innovative, including state-of-the-art machinery.



10 Mio

Investment in new
machinery during the
2020 relocation

What sets us apart

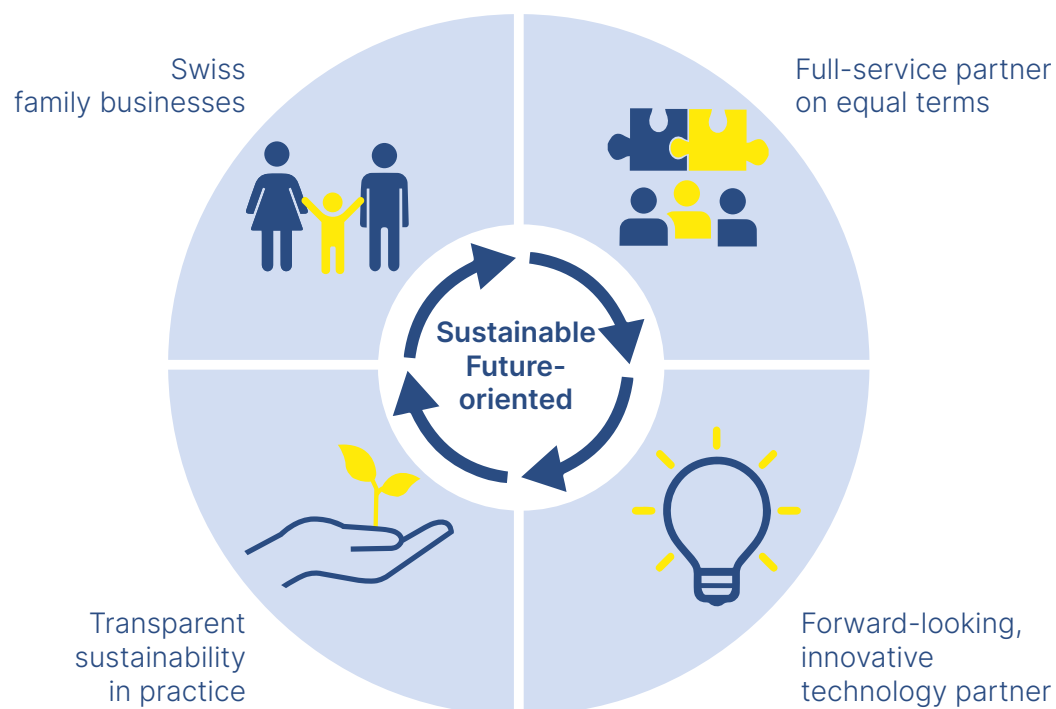
We consistently align our actions with the market and the needs of our customers and industries. Our focus is on practical solutions, reliability and cooperation based on partnership.

With a view to the challenges of tomorrow, we continuously invest in new technologies and in the professional and personal development of our employees.

In this way, we ensure that we remain efficient, innovative and competitive in the future.

Through quality, efficiency and long-term solutions, we generate real added value for Switzerland.

Our range of services combines all competencies under one roof: from planning and engineering to in-house production and design, software development and long service life.



Our DNA



1937

Company founded by
Walter Stöcklin



1954

Development of
the pallet truck

Stöcklin

1991

Walter Stöcklin becomes
Stöcklin Logistik AG



1995

The company is taken
over by Urs Grütter



2013

Development of auto-
nomous Forklift trucks



2017

Digitalization 4.0



2002

Development of new
AKL and BOXer genera-



2020

Relocation to the new
Technology Center
in Laufen



2024

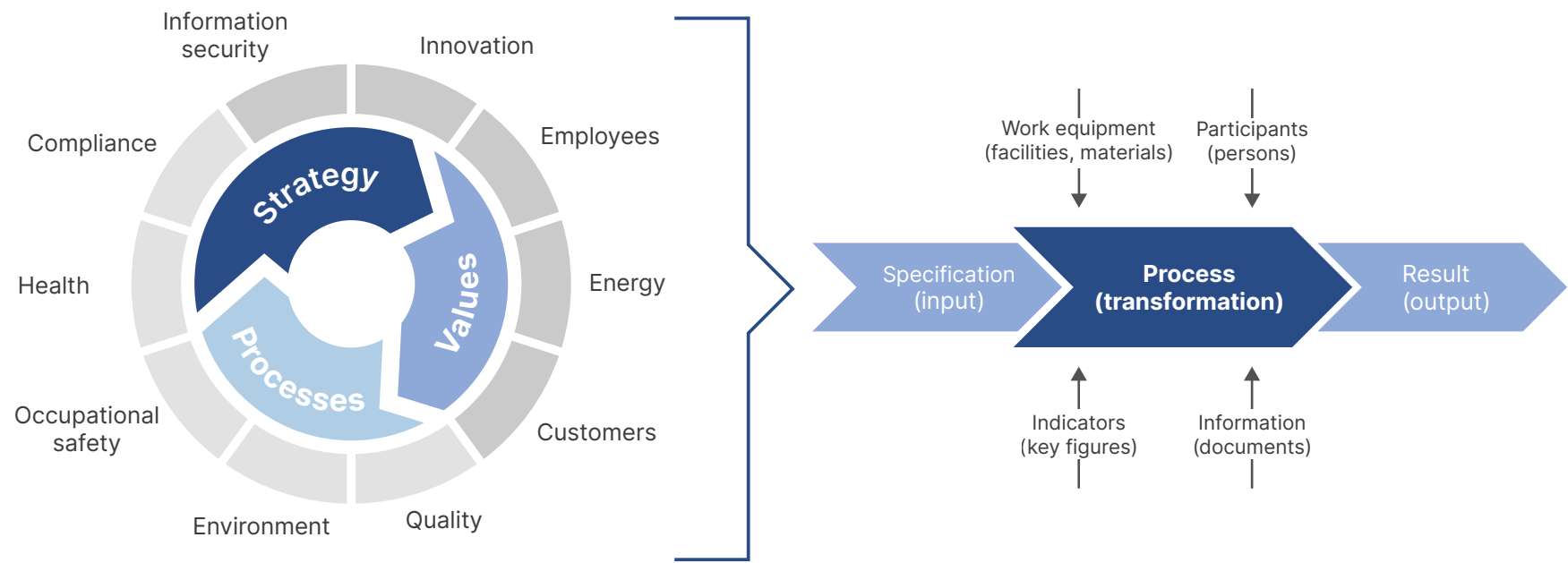
Jürg Frefel becomes the
new Group CEO

General management approach

Stöcklin GROUP combines economic success with ecological and social responsibility. Our goal is to offer innovative and sustainable intralogistics solutions that help our customers to work more efficiently and conserve resources.

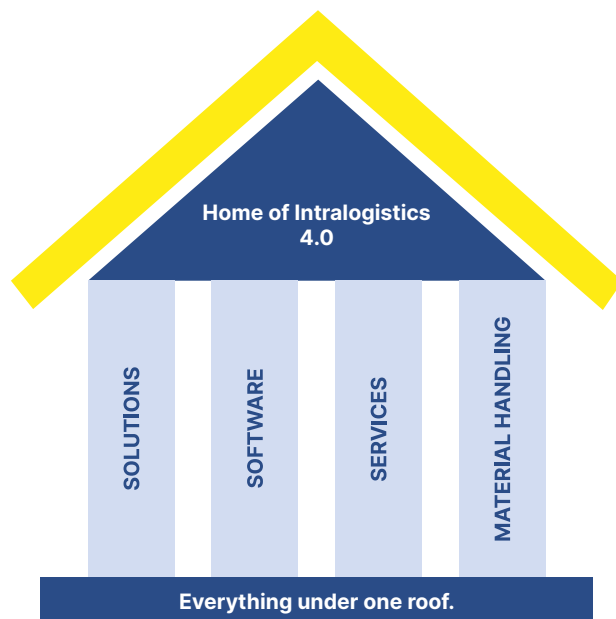
Our corporate culture is based on openness, equal opportunities and the promotion of our employees. Sustainability is integrated into all areas - from environmentally friendly engineering to responsible supply chains.

Through innovation, quality and a strong commitment to the community, we create long-term added value for our customers and society.



Home of Intralogistics

At our headquarters in Laufen, all of our services are provided under one roof, based on our four central business areas: Solutions, Software, Services and Material Handling.



The future always has origins

Future-proof handover to the next generation

This is the basis that Jürg Frefel, as the new Group CEO, took over at the beginning of 2024 to drive Stöcklin forward and promote the transition for the new generation.

Urs Grütter will remain active at his side as Chairman of the Board of Directors. Because the future always has origins that must be respected. Now the next generation is ready with our expanded management team to continue to grow sustainably through customized System solutions.

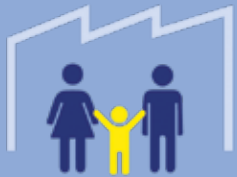




Our mission:

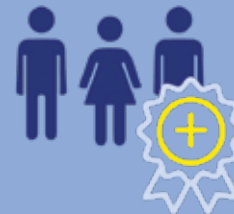
We support our customers in their digital transformation in the long term. Through a deep understanding of their products, markets and target groups as well as a holistic view of the chances, we develop future-proof, intelligent solutions together. Our goal is to support efficient and sustainable operations in the long term through demand-oriented long-life service modules and services.

What we stand for



Family business

Trust, tolerance and respectful cooperation form our foundation, with short decision-making paths and flat structures.



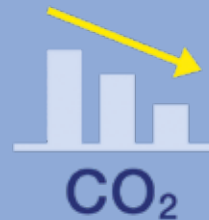
Employee benefit

Motivated employees are the key to our success. That is why we give our employees a share in our success and pay appropriate wages and above-average social benefits.



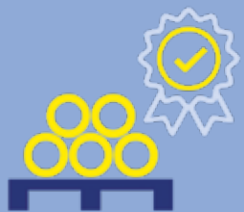
Everything under one roof

All processes and departments are in-house, with short distances and open offices for direct communication and creative replacement for the development of ideas.



Ecological footprint

In the last 10 years, we have reduced our ecological footprint by 60 %.



Certified raw materials and supplier management

We only use certified raw materials and attach great importance to sustainable supplier management.



In-house testing

All our products undergo In-house testing. Our know-how and experience from 90 years of intralogistics warranty that only flawless products leave our company.



Resource-conserving production

In our production and product development, we always keep an eye on pollutant emissions and ensure resource-conserving production.

In harmony with people, the environment and the economy

Sustainability is one of the defining issues of our time. In the face of natural disasters, scarcity of resources and Acceleration of climate change, we are reminded daily of how important it is to rethink our habits and take new, forward-looking paths.

Sustainable development requires a holistic interplay of economic, ecological and social aspects. Those who recognize this and resolutely implement the necessary actions will be able to successfully master the challenges of the future.

At Stöcklin Group, we recognized the importance of this approach early on. Our corporate strategy is based on sustainable management that builds on the precautionary principle.

Supported by certified quality management systems, we consistently implement this strategy – for the benefit of our environment, our employees and our company.

We have also integrated the United Nations Sustainable Development Goals (SDGs) into our strategic planning and anchored their content in our sustainability report. This provides us with a clear and internationally recognized framework for action



Shaping sustainability – acting today for tomorrow

Digitalization as a lever for sustainability

Our vision is to sustainably expand our leading position in the intralogistics market in our target markets and achieve healthy, self-financed growth. Digitalization plays a key role in this. It not only opens up new opportunities for us, but also helps us to use resources more efficiently. In production in particular, we are using digital tools to make processes more sustainable. Investing in our state-of-the-art production facilities was one of the strategically important cornerstones for achieving sustainable growth. However, digitalization is not only changing production, but also planning, consulting and administrative processes. Our customers benefit from the fact that we not only offer high-quality solutions, but can also adapt and integrate them to meet their specific needs.

Sustainability thrives on people's commitment

A decisive factor for the success of sustainable concepts is people. Sustainable action cannot be enforced by regulations - it must be part of the corporate culture. At Stöcklin Group, this idea is firmly anchored. Our employees live the principles of sustainability every day. We also encourage our Partners, such as suppliers, to adhere to clearly defined sustainability criteria.



Shaping sustainability – acting today for tomorrow



The active involvement of all stakeholders is particularly important to us. As a company with regional roots, we attach great importance to raising awareness of sustainability issues. We achieve this through numerous projects and actions aimed at minimizing the effects of our activities on the environment and climate. Our goal is clear: to make a positive contribution for current and future generations.



Our goals for the future

Contribution to the UN Sustainable Development Goals (SDGs)

Stöcklin Group's sustainability strategy is based on the United Nations Sustainable Development Goals (SDGs). As an innovative intralogistics provider and responsible employer, we make a concrete, comprehensible contribution to selected goals.

SDG 4 - Quality education

Promoting education and qualifications is a central concern of our company. As a training company, we make targeted investments in the next generation of specialists - in both the industrial-

technical and commercial areas. Our trainees not only gain in-depth specialist knowledge, but also insights into sustainable working methods and future-oriented thinking. Further training opportunities for employees round off our commitment to lifelong learning

SDG 5 - Gender equality

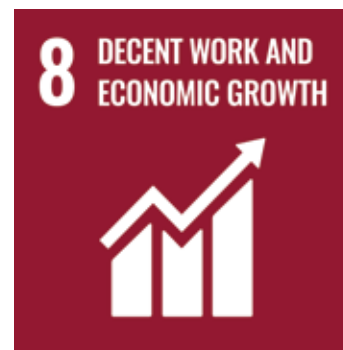
We focus on diversity and promote equality for all employees - through fair personnel development, transparent structures and the targeted promotion of women in Engineering and Leadership.

SDG 8 - Decent Work and Economic Growth

We create safe and fair working conditions, promote internal development opportunities and combine sustainable growth with social responsibility. The focus is on reconciling work, health and further development.

SDG 9 - Industry, innovation and infrastructure

Our innovative Intralogistics systems combine engineering with sustainability - through energy-efficient processes, modern automation and digitalization



SDG 12 - Responsible consumption and production

Our products and processes are designed for efficiency, long service life and resource conservation - from design to disposal. Internally, we pay attention to the circular economy and the sustainable use of materials.

SDG 13 - Climate action

We make an active contribution to climate protection through energy-optimized operational management, conscious use of resources and the deployment of climate-friendly engineering.

SDG 15 - Life on land

We actively promote biodiversity on our company premises with our own bee colonies. By pollinating native plants, the bees contribute to the protection of local ecosystems.

SDG 17 - Partnerships to achieve the goals

We cooperate with schools, universities, partners and networks to jointly promote sustainable development - regionally and across industries.

Conclusion:

For Stöcklin Group, the SDGs are not just a global frame, but a concrete basis for action. Whether through training, innovation, environmental projects or fair work - we take responsibility for a sustainable future.



Sustainability - Mission statement for the future

Consistent and transparent communication with our stakeholders is a central component of the corporate philosophy of Stöcklin Group. This applies in particular to the topic of sustainability, which has become the Ladder of our actions. The transition to a sustainable society is one of the greatest challenges of our time. Against this backdrop, sustainability plays a decisive role in the strategic orientation and operational implementation of our company. It supplements our core competencies in the development of innovative intra-logistics solutions, state-of-the-art production technology, quality and cost efficiency.

In our sustainability mission statement, we clearly acknowledge our economic, ecological and social responsibility. We see sustainability as a dynamic, continuous process that is shaped by technological, economic and social developments. We therefore rely on open dialog and partnership-based cooperation with our stakeholders. Together we define concrete, evaluable

sustainability goals, develop them further and adapt them to new conditions as required.

Systematic analysis for a sustainable future

As part of its sustainability strategy, Stöcklin Logistik AG has started a comprehensive materiality analysis to identify key topics in the areas of environmental, social and corporate governance (ESG). This process lays the foundation for targeted actions and investments in sustainable initiatives.

As a first step, the Sustainability Group conducted a preliminary analysis to identify key ESG issues that are of designation to our company and our stakeholders. These priorities serve as a guide for our strategic decisions and our commitment in the area of sustainability.

The next step is to drive a workshop on what is known as "dual materiality", in which all members of the executive board are also actively involved. In this dialog, we evaluate both the internal effects of our actions (inside-out) and external

influences on our business activities (outside-in). The focus is on topics that are particularly relevant to the long-term success of our company. The results are visualized in a materiality matrix, which serves as a basis for decision-making for our ESG strategy.

60%

Have we been able to reduce our ecological footprint in the last 10 years.

Stakeholder involvement – defining goals together

Cooperation with our stakeholders is a central component of our analysis. These include our employees, key suppliers, customers and shareholders. Their perspectives and priorities are systematically recorded through workshops, surveys or a combination of both methods. This involvement is essential in order to develop a holistic and practical ESG strategy.

A clearly structured process for materiality assessment

Our approach to creation of the materiality matrix is based on four core steps:

Identification: We identify internal and external stakeholder groups.

Data collection: We analyze the relevance of ESG issues for each stakeholder group.

Prioritization: The topics are ranked according to their effects and designation for our stakeholders.

Visualization: The results are summarized in a materiality matrix.

The result is a precise tool that enables the management board to allocate resources effectively, make well-founded decisions and clearly define the focus of our sustainability strategy. Stöcklin Logistik AG is thus implementing a systematic and future-oriented process that brings economic, ecological and social responsibility into harmony and further underpins our claim to sustainable excellence.



Economic success and stability

Sustainable economic success is the basic principles and at the same time the goal of all activities of Stöcklin Group. It creates the opportunity to act independently and flexibly in entrepreneurial decisions, to drive innovation in engineering and digitalization and to build up reserves for economically difficult times. In order to further consolidate our position as one of the leading providers of intralogistics solutions, we are continuously expanding our portfolio and developing our range of services.

Stöcklin Group uses a structured leadership and target system to steer its actions towards strategic corporate goals. We see the dynamic developments in the intralogistics industry - in particular due to the growth of e-commerce and the increasing requirements for flexible, efficient supply chains - as both a challenge and an opportunity.

In order to actively shape this change, we are developing tailor-made strategies that enable us to create solutions while at the same time maintaining our existing customer relationships and service offerings.



Digitalization as the key

Digitalization is shaping the future of intralogistics and is a central component of Stöcklin Logistik AG's sustainability strategy. Deployment of modern engineering not only optimizes processes, but also makes a significant contribution to conserving resources and improving efficiency in the supply chain.

Digital workflows enable the seamless integration of processes and minimize errors through automated data collection and processing. Internally, we rely on process-oriented software solutions that warranty transparency and traceability along the total value chain.

Another focus is on the intelligent networking of our systems. Real-time data analyses support the precise planning and controller of work processes and enable resource-efficient, on-time order processing.

In addition to the chances of digitization the challenges associated with it.



associated challenges. The growing energy requirements for IT infrastructure are offset by the deployment of energy-efficient servers and sustainable energy sources. In order to warranty data security, we continuously evaluate the systems used and rely on close cooperation with external data protection experts.

With these initiatives, Stöcklin Logistics AG combines digital transformation and sustainability to create innovative and future-proof solutions for the intralogistics industry.



Sustainability in the vehicle and forwarding agency areas

In the frame of our continuous efforts towards more environmentally friendly and resource-saving logistics, we place special issues on sustainable transportation solutions - both in local and long-distance transport.

A central component of our logistics strategy is the consistent deployment of **sustainable packaging materials**. Wherever possible, we use recyclable or reusable materials to minimize packaging waste and reduce ecological effects along the supply chain.

We are constantly optimizing our transport planning to improve **efficiency in conveying** and reduce CO₂ emissions. Our aim is to **avoid empty runs** and warranty **maximum truck capacity utilization**. Through intelligent route planning, close coordination with our logistics partners and the bundling of shipments, we achieve the highest possible efficiency in road freight transport.

When transporting goods internationally, we pay particular attention to **reducing air freight to a minimum**. Whenever possible, we choose more environmentally friendly transportation alternatives. In overseas traffic in particular, we rely on combined transport: we prefer to transport goods that are exported to seaports **by barge via the Rhine** - a lower-emission and congestion-free alternative to traditional truck traffic.

Conveying by road, we are increasingly using vehicles with the **latest Euro standards**. Our fleet and that of our freight forwarders is continuously being converted to the deployment of vehicles with the latest **Euro VI standards**. We are also making targeted investments in **electric vehicles**, particularly for internal conveying and short distances in urban rooms.

To support this development, we have installed **charging stations for electric vehicles** at our site in Laufen.

These are available to both the company's own vehicle fleet and our employees in order to actively promote the switch to electromobility.

Through these actions, we are making a concrete contribution to **decarbonizing the supply chain**, reducing local emissions and strengthening sustainable, responsible logistics.

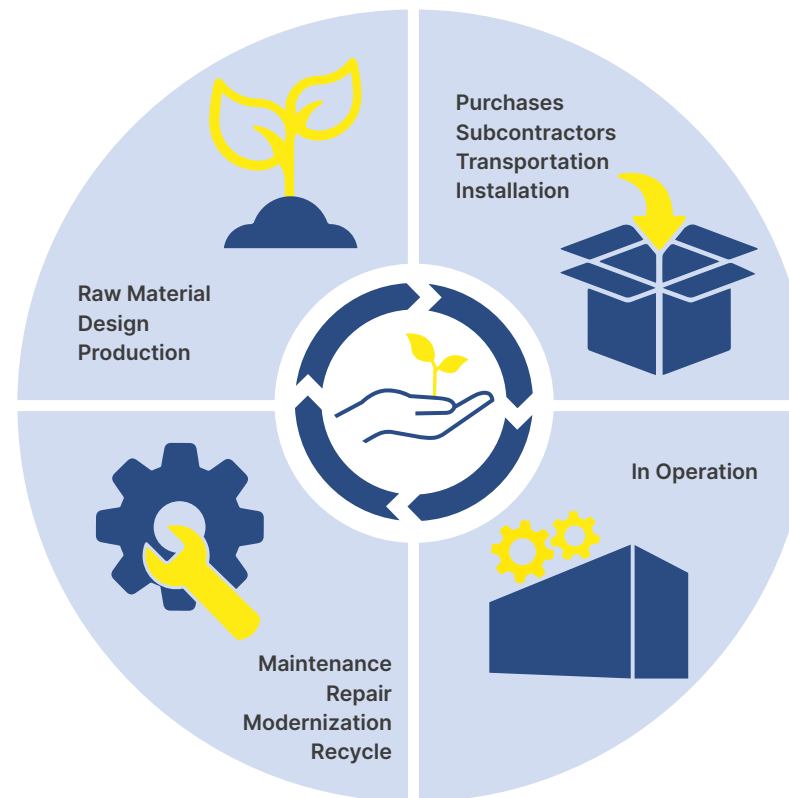


Sustainable use of materials and promotion of the circular economy

The efficient use of materials and the implementation of a circular economy are central components of our sustainability strategy. Through targeted actions, we minimize the deployment of packaging materials, increase the proportion of recycled materials in our products and continuously optimize our waste processes.

In view of the increasing regulatory requirements, we are developing a holistic concept for sustainable materials management. We are also focusing on innovative solutions such as rental models that extend the service life of our products, conserve resources and offer our customers flexible usage options.

With these initiatives, Stöcklin Group not only strengthens its position as a responsible player in intralogistics, but also makes an important contribution to reducing the ecological footprint along the entire value chain.





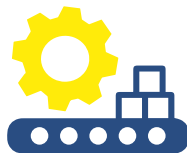
Product lifecycle

Stöcklin Group is committed to a sustainable product cycle that conserves resources and reduces environmental impact. Our goal is to create sustainable solutions throughout the entire life cycle of our products – from development to recycling.



Sustainable design and lengthwise products

Right from the development phase, we place great importance on resource-conserving design and the use of high-quality materials that ensure the long life of our products. Warranty on the lengthwise service life of our products. Modular systems enable simple maintenance and repair, which further extends life cycles.



Efficient production and logistics

Our production processes are geared towards Energy efficiency and waste avoidance. We optimize the use of raw materials and rely on short, climate-friendly transportation routes to improve our environmental footprint.



Reuse and recycling

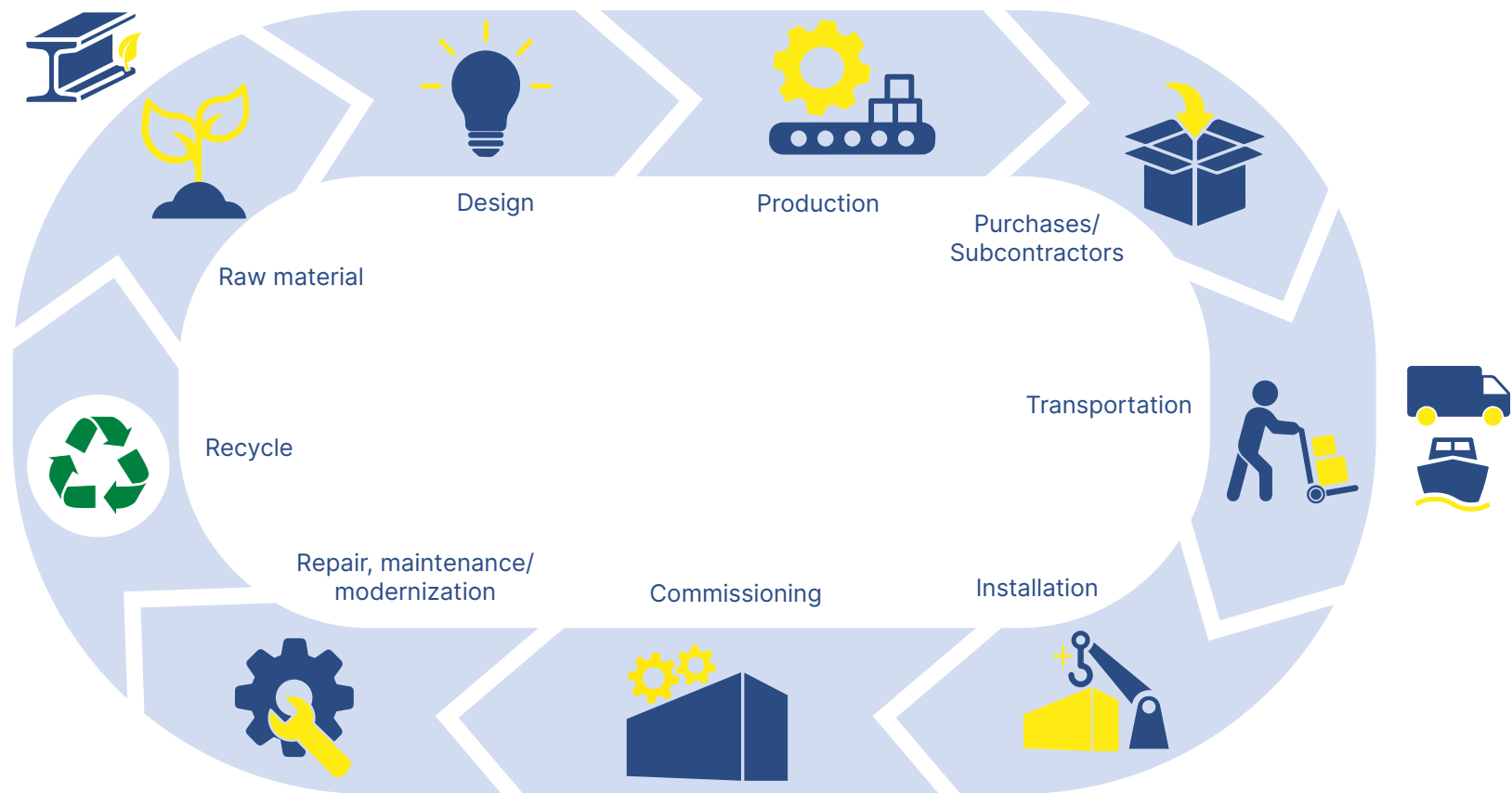
At the end of the product life cycle, we promote the return and reuse of components. Where this is not possible, we use recycling to ensure that valuable materials are brought back into the cycle.



Partnership for sustainability

We work closely with our customers and suppliers to promote sustainable practices along the entire value chain. In this way together, we create sustainable solutions that meet the requirements of a circular economy. A sustainable product cycle is an essential part of our commitment to resource-conserving and responsible intralogistics.

From procurement to recycling – a well-rounded approach



Sustainable new construction – future-oriented infrastructure with ecological responsibility

With the new construction of our company premises, we are sending a clear signal for sustainable development and energy-efficient construction. From November 2018, a modern building complex was built on an area of 34,000 m², which was occupied in May 2020. Great importance was placed on environmental compatibility, energy efficiency and modern building engineering right from the planning phase.

The buildings consist of a solid construction (concrete) with a glass/metal façade and a steel construction with a sandwich panel façade. The flat roof was extensively greened, which helps to improve the microclimate and retain rainwater. A roof terrace complements the architecture and increases the quality of stay for employees.

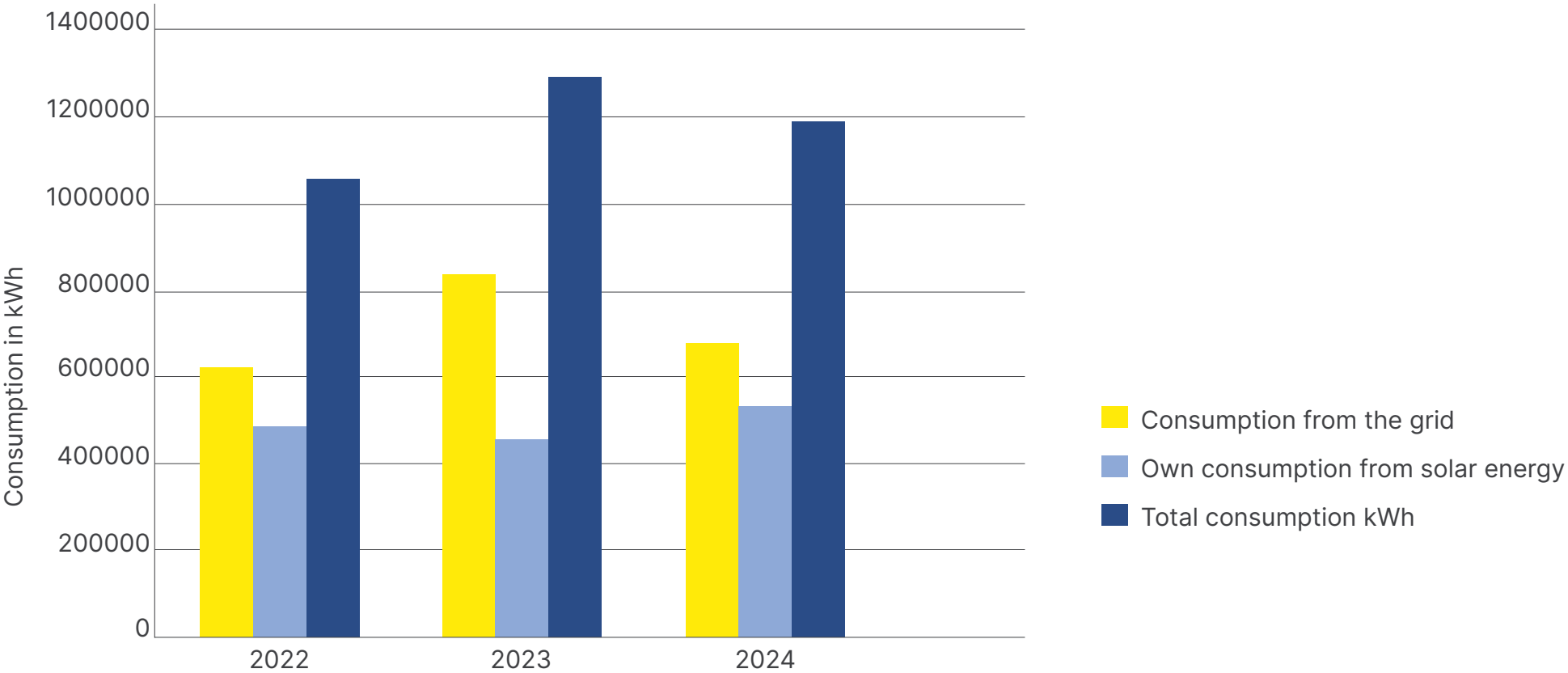
The energy supply is based on a well thought-out, sustainable Concept

- Geothermal energy covers 50-80% of the heating and 100% of the cooling via 60 geothermal probes.
- Natural gas is also used for peak heating loads.
- A high-performance photovoltaic plant with over 850 kWp supplies the production hall, the office building and the high-bay warehouse with clean solar power.

With this investment in an energy-efficient, future-oriented infrastructure, we are making an important contribution to reducing CO₂ emissions and the sustainable use of resources - in line with the "environmental" focus of our ESG strategy.



Electricity consumption from 2022



Reduction of environmental pollution through our own wastewater pre-treatment plant

Responsible use of natural resources is a central component of our understanding of sustainability. With our internal wastewater pre-treatment plant, we make an active contribution to environmental protection and compliance with legal environmental standards.

Every year, around 29,000 liters of wastewater are pre-treated in our plant before being fed into the municipal wastewater system. Targeted filtration and the removal of pollutants such as oils, fats and fine particles ensure that environmental pollution is reduced to a minimum.

This action supports our commitment in the "Environmental" area of the ESG criteria and shows how technical solutions can help to make operations more sustainable. The continuous maintenance and monitoring of the plant warranty on a reliable function and contribute to the conservation of regional water resources.

Conserving resources through proper waste disposal and recycling

A central component of our environmental strategy is the consistent separation and professional disposal of waste. Through these actions, we ensure that valuable materials such as metals, plastics, electronics and packaging materials are not lost as waste, but are returned to the material cycle.

Our employees are trained in the careful handling of waste and separate all materials according to clearly defined specifications. Disposal is carried out in cooperation with certified specialist companies that professionally process recyclable materials and send them for recycling.

In this way, we actively contribute to conserving resources, reducing our ecological footprint and promoting a functioning circular economy - an important contribution to the "environmental" aspect of our ESG responsibility.

148'181 kg

Of which hazardous
waste 64'662 kg & other waste
83'519 kg

Climate protection and energy management

Climate protection is a central component of Stöcklin Group's sustainability strategy. As a provider of innovative intralogistics solutions, we bear responsibility for reducing greenhouse gas emissions along our entire value chain and implement targeted measures to minimize our ecological footprint.

One of the biggest levers lies in optimizing energy efficiency. We continuously invest in modern, low-energy engineering for our systems and plants in order to reduce energy consumption in our own processes and solutions for our customers.

Intelligent control systems and energy-optimized conveyor systems reduce energy requirements while maintaining high performance.

In our operating processes, we ensure that resources are used as sparingly as possible. This includes optimizing the choice of materials in favour of slight, long service life and recyclable materials as well as minimizing production waste.

By analyzing and improving transportation routes within the supply chain, we are helping to reduce CO₂ emissions.

Special issues include the integration of energy-efficient bearing and transport systems for our customers. Automated solutions that reduce both space requirements and energy consumption offer tangible benefits. At the same time, we advise our customers on energy-efficient operating methods and jointly develop solutions that reduce emissions and operating costs in the long term.

Our approach goes beyond technological innovation: we create an awareness of climate-friendly action at all levels of the company and promote the responsible use of energy and resources. With these actions, Stöcklin Group makes a substantial contribution to climate protection and develops sustainable solutions for future-proof intralogistics.



Attractive employer

Training, development and focus on well-being

In order to meet the growing challenges on the labor market, we focus on continuous training, targeted support and professional development opportunities. As a modern employer, Stöcklin Group offers flexible working models, attractive additional benefits and clear career prospects. One focus is on our training and further education programs, which are individually tailored to the needs of our employees. These actions encourage both personal and professional development and strengthen our position as a forward-looking employer.

Our training and development programs and talent development measures ensure that we not only retain existing specialists, but also attract new talent.

The health and well-being of our employees are special issues for us. Ergonomically designed workplaces and an in-house restaurant with freshly prepared, healthy and locally sourced food contribute to a positive working atmosphere. We offer numerous incentives for sustainable mobility: our locations are well connected

to public transport and employees can benefit from discounted job tickets. There are also free parking spaces with charging stations for electric vehicles and secure shelters for bicycles. With these actions, Stöcklin Group is creating a working environment that not only takes into account the individual needs of its employees, but also contributes to a sustainable and responsible work culture.



Globally active, financially stable, and innovation-oriented family business



Positive and appreciative work environment



Flexible working hours, > 25 days of vacation



Active promotion of rotation and further training



Attractive compensation and benefits package

Training and further education 2024



Training costs (CHF)

external: 55'911.40
internal: 16'590.95



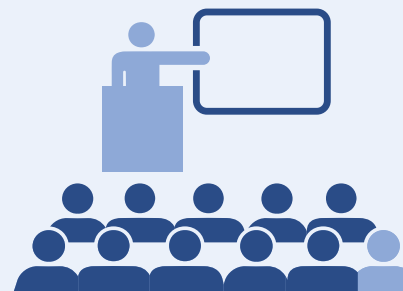
Number of participants

external: 54
internal: 228



Total duration of training courses (h)

external: 650
internal: 410.95



Number of training courses conducted

external: 7
internal: 29

Safety and health as the basic principles of sustainable work

The safety and health of our employees is a top priority at Stöcklin. We create the basis for a safe and healthy working environment with a company safety concept and a solid occupational safety system in accordance with ASA Directives. This system is based on clearly defined processes, regular risk assessments and continuous training and sensitization of all employees.

Our safety organization constantly monitors compliance with legal requirements and internal standards. Preventive actions such as the provision of personal protective equipment, ergonomically optimized workplaces and regular emergency drills are firmly anchored in our daily routine.

In this way, we actively contribute to the social dimension of our ESG responsibility - because for us, sustainable action not only means protecting the environment and resources, but also caring for the people who contribute to our company's success every day.



Compliance - responsibility and integrity in intralogistics

At Stöcklin Group, acting responsibly is at the center of everything we do. We are guided by high standards of integrity, transparency and fairness in order to strengthen the trust of our employees, customers and partners. Our Code of Conduct provides clear guidance for ethical conduct in areas such as anti-corruption, data privacy protection and fair working conditions. We rely on an open corporate culture that integrates responsible behavior into everyday life.

For us, sustainability is an essential part of integrity. With environmentally friendly solutions and the promotion of social standards in our supply chains, we actively contribute to sustainable intralogistics.

Our goal is to combine responsible action with economic success and thus enable long-term, positive development for our company and our environment.



Taking responsibility and implementing it consistently - that is our credo at Stöcklin.

Daniela Weiss
Group General Counsel / Vice President

Sustainable partnerships

Cooperation with with the Bürgerspital Basel (BSB)

For over 20 years, Stöcklin has been working together with the BSB, an institution which offers meaningful jobs to people with disabilities. In this protected working environment, demanding activities such as the assembly of cables and the manufacture of cable harnesses are carried out for Stöcklin under expert supervision.

With an annual order volume of around CHF 250,000 to 300,000, we not only make an economic contribution, but also strengthen the social aspect of our ESG responsibility in particular. Through this partnership, we are actively promoting the social participation and integration of people with disabilities into the world of work.

This cooperation is exemplary for our commitment in the "social" area of the

ESG approach: We are committed to building long-term, inclusive working relationships and thus conveying social justice and sustainable development in the region.

Other valuable collaborations in the social area

- BSB production & engineering, Basel (cable harness turnover approx. 250,000 - 300,000/year)
- VEBO Breitenbach and Oensigen (Assembly and mechanics)



Picture: Bürgerspital Basel (BSB)

Sustainable success with long service life

Interview with Damaris Grütter

Ms. Grütter, where does sustainability begin for Stöcklin Group?

For us, sustainability begins where we can actively exert influence. We are convinced that sustainability must be practiced at all levels in order to have a truly positive impact on the future. The topic of green logistics has been on our agenda since 2010. The planning and construction of our innovative and sustainable Technology Center in Laufen, which was completed in June 2020, provided the opportunity to approach and implement the topic holistically for production, buildings, infrastructure and employees. Total machinery was renewed and state-of-the-art, sustainable production processes were implemented. This enabled a significant improvement in working ergonomics for employees as well as consistent internal sustainability management.

How do you reduce the CO₂ footprint of your customers and your own sites?

First of all, we help our customers to understand which intralogistics processes can influence their ecological footprint and show them what savings are possible if they use alternative materials such as green steel or wood in stock. Of course, it is not only the materials used that play a role in such highly complex logistics solutions. Storage strategy, the use of braking forces (recuperation) and intelligent processes are also crucial to using energy efficiently. Thanks to these measures, our customers can reduce their energy requirements by up to 20 %. We also advise our customers on the use of renewable energies, as we ourselves rely on solar energy and geothermal probes for heat/cold replacement at our main site in Laufen. With the move into our new site in Laufen, we were able to reduce our energy footprint by 60%, which is a remarkable figure that we are proud of.



For us, sustainability begins where we can exert influence.

Damaris Grütter, Group CMO and Sustainability Ambassador

Sustainable success with long service life

You attach great importance to resource efficiency when developing new products - what does that mean in concrete terms?

When developing new products, we attach great importance to resource efficiency, which is reflected in several areas. We select materials that are environmentally friendly and sustainable, such as recycled or recyclable material, green steel or wood from certified sources. Our design process is geared towards minimizing material waste and maximizing the service life of our products. This includes modular designs that facilitate repairs and upgrades, as well as optimizing product dimensions to reduce the use of materials.

We rely on energy-efficient processes and technologies in the production of our products. This includes the deployment of modern machines that consume less energy and the use of energy from renewable sources such as solar energy. We implement lean manufacturing principles to avoid wasting resources in production. Through

continuous improvement and automation, we reduce energy and material consumption and increase efficiency. We optimize our logistics chains to shorten transport routes and reduce the associated emissions. Where possible, we rely on local suppliers and use environmentally friendly packaging materials.

We develop our products in such a way that they meet the needs of our customers today and tomorrow and are scalable. At the end of their life cycle, our solutions can either be modernized or recycled.

We continuously train our employees in resource-efficient practices and promote a corporate culture that prioritizes sustainability. We also consider the retention of our employees to be an important contributor to resource efficiency, as the knowledge and expertise of our long-standing employees are continuously incorporated into our products and services.

Consulting our customers on the resource-efficient use of our products and offering solutions

that help them to optimize their own resource consumption and improve their environmental footprint. By taking these measures, we ensure that we not only develop environmentally friendly products, but also make our entire value chain sustainable. For us, resource efficiency means doing more with less without compromising the quality of our solutions.

Sustainable success with long service life

How important to you is the long service life and reparability of your products?

This plays a decisive role in our sustainability approach. Our solutions are characterized by their long service life, which is reflected in a steadily growing customer base in the area of modernization. We also value the reparability of our products in the area of material handling, especially fork lift trucks. Investing in high-quality products pays off thanks to their lengthwise service life. A closer look at the total cost of ownership shows that the acquisition costs are worthwhile thanks to our cost-efficient after-sales service.

As a family business, Stöcklin Group is also socially committed - can you give us an example?

Within our sponsoring activities, we place great importance on supporting regional associations, especially in the area of youth sports. We firmly believe that promoting young talent not only strengthens sports, but also the community. We are also actively involved in various professional groups and business associations. These com-

mitments enable us to share our knowledge and at the same time benefit from the experience of others. In this way, together we can have a positive impact on the economy and society.

And finally, a personal question: how do you live sustainability in your everyday life?

In my everyday life, I try to avoid traveling by car as much as possible. Instead, I walk or use my bike. This is a value that I also pass on to my children. Movement helps us to improve our health and protect the environment at the same time.

I also attach great importance to buying local products and pay particular attention to seasonal fruit and vegetables. At home, I rely on sustainable energy sources: Our electricity comes from our photovoltaic system and we use district heating for our heating.

I also firmly believe that a good education is sustainable. I see acquiring knowledge and applying it later as the key to success. Only if we unders-

tand interrelationships can we actively bring about change.



A question of responsibility – conveying biodiversity

Stöcklin Group sets a powerful example for the protection of biodiversity and is passionately committed to sustainable, future-oriented environmental design. As a responsible company, we are convinced that ecology and economy do not have to be opposites – on the contrary, they complement each other in a meaningful way.

A valuable element of our environmental commitment is our own bee colony. Under the expert care of a local beekeeper



and a company project sponsor, we ensure that the bees can thrive in a protected and natural environment. In doing so, they make a valuable contribution to local pollination and the preservation of numerous plant species.

For us, caring for the bee colony is much more than a symbol: it is an expression of our attitude of taking responsibility and actively contributing to the preservation of natural cycles. The resulting honey is a symbol of the close, harmonious connection between humans, animals and nature.

With this project, we not only want to contribute to the promotion of biodiversity, but also raise awareness of the value of an intact environment in our company and beyond.

**Together for a sustainable future –
Stöcklin Group**



Beekeeping shows me how important sustainable action is, even on a small scale.

Stephen Lang, Ladder Internal Sales and passionate hobby beekeeper

Active sponsoring in the regional environment

Stöcklin Group has been committed to sports, culture and the promotion of the logistics industry for many years. Our wide-ranging sponsorship reflects our commitment to society and the values that are close to our hearts.

In the field of sport, we support regional associations and initiatives, including:

- **The children's football camps of SC Dornach**, which we have been supporting for almost 20 years in order to strengthen the next generation.
- The **women's team of FC Reinach**, to promote the development of women's football.
- The **TV Dittigen gymnastics club**, which gets people of all ages moving.
- The 1st team of **FC Aesch**, which impresses with its sporting performance.

Cultural commitment is also important to us: by supporting **Basel Groove**, we promote the local cultural scene and contribute to the diversity of cultural life in the region.

We are also involved in the logistics industry as Partners of the **Swiss Logistics Hall of Fame Award**, which recognizes individuals who have made outstanding contributions to the development and recognition of logistics.

Whether in sport, culture or logistics - we are actively committed to a vibrant community and a sustainable society.

Stöcklin Group - committed to our region and industry.



Imprint

Publisher

Stöcklin Logistik AG
Home of Intralogistics
Wahlenstrasse 161
CH-4242 Laufen

+41 61 705 81 11
info@stoecklin.com
www.stoecklin.com

Authorized representative

Jürg Frefel, Group CEO

Responsible for the Content

Damaris Grütter, Group CMO
and Sustainability Ambassador

Stöcklin
Home of Intralogistics

