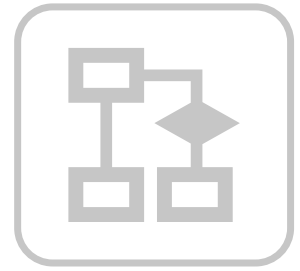


# Stöcklin DMA



## WE BRING YOUR BUSINESS TO A HIGHER AVAILABILITY

### Data, Monitoring and Alerting

StöcklinDMA – Data, Monitoring & Alerting – is an instrument for predictive maintenance as well as continuous process visualization and optimization. The statistical, analytical, predictive and alarming functions prevent unplanned down times and increase the availability of machines and equipment in production and intralogistic applications. Globally active companies also profit from this automated monitoring and control.

StöcklinDMA is the newest development in the Stöcklin Software Suite product family, marking an important milestone in realizing the potential of Industry 4.0/IoT. StöcklinDMA allows early recognition of at-risk system components as well as accident-sensitive processes providing automated notification to the responsible supervisory authorities. This puts users in a position to initiate ad

hoc counter-measures within the sense of “predictive maintenance” long before any damage or continuous, expensive down times occur.

Within the sense of Big Data, StöcklinDMA collects all relevant data in an enterprise data model (machine-related or from a business application), puts it into the specific context relevant for the decision making process and visualizes the derived information. The in-memory database accelerates access and provides optimum quality result. The data obtained is used in the course of predictive maintenance as well as for continuous process optimization. Moreover companies profit from improved parts management and can utilize their resources more efficiently. For example, the electrical power consumption can be managed on the basis of special energy patterns.

The cloud-based IoT technology

developed by Stöcklin allows all common file formats to be processed. Security is ensured for the data in the cloud, and access to the data is possible online, as well as locally. StöcklinDMA can be used independently for “Proactive Event-Monitoring & Alerting” within the shortest possible time. This alarm can be sent as a text message, email or WhatsApp message.

The customizable Central Dashboard shows an overview of the latest results and is available to StöcklinWMS/WCS as a standard feature. Out of the box, StöcklinDMA also provides detailed views, analyses and information.

# StöcklinDMA

## Central Dashboard

All important data at a glance. This is the benefit of StöcklinDMA. The Central Dashboard is the starting point for any data analysis, providing an overview of all important system data. The Dashboard consists of a number of individual widgets, which customers can customize to their specific requirements and preferences. The basic version is available to every StöcklinWMS/WCS customer as a standard feature. For example you can display your best figures on a large monitor or take a look at your production figures anytime on your smartphone. Everything is possible.

## Statistics

StöcklinDMA puts the millions of figures provided every day by your system into an orderly form. Learn how to understand this data and use it to your profit. All important data can be filtered in the statistics modules and categorized according to certain time periods. Do you have other applications for your data? No problem. You can export it and capitalize on your own analyses. Everything is possible.

## Monitoring

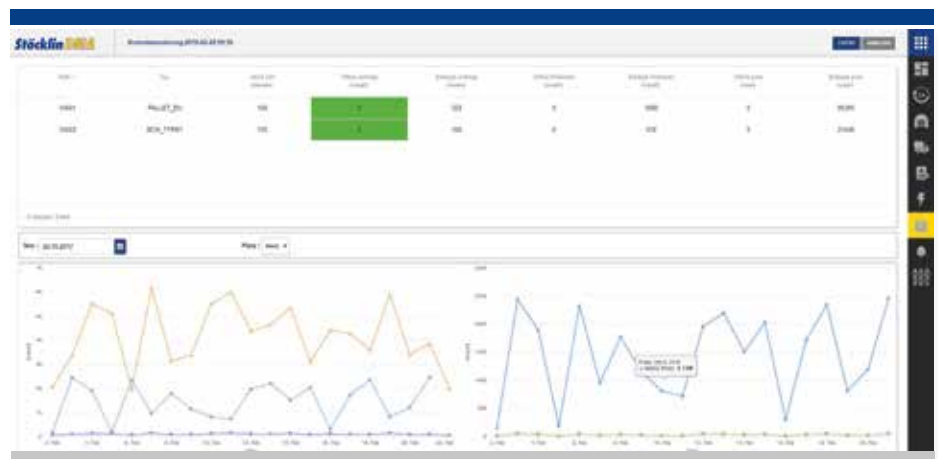
StöcklinDMA monitors process limits, safety-relevant elements and IT networks, allowing proactive recognition of problems arising at an early stage and alarming the proper addressee. This minimizes down times for your system. Everything is possible.

## Service

Our virtual service desk makes it possible for customers to review current and past ticket information online. Moreover it offers a parts management feature. A web conference can be convened via a smartphone/tablet connection, whereby customers are provided competent and selective remote support for troubleshooting by our Stöcklin Support Service. This allows them to cooperate more efficiently with our service desk. Everything is possible.

## Forecast

Bottlenecks in the warehouse, material flow and resources can be calculated in advance and displayed using statistical data. Moreover, maintenance cycles and inspections can be calculated based on system data and notifications sent to the customer at an early time for scheduling. Learn how you can use your data to make informed, predictive decisions. Everything is possible.



**Stoecklin Logistics Inc.**  
US-Atlanta, GA 30319  
tel +1 678 244 1537

info-us@stoecklin.com

**C.A.S. Engineering Ltd.**  
GB-Aston Oxon OX18 2DQ  
tel +44 1993 851790  
fax +44 1993 851793

info@stocklin.co.uk

**Stöcklin Logistik AG**  
CH-4143 Dornach  
tel +41 61 705 81 11  
fax +41 61 701 30 32

info@stoecklin.com  
www.stoecklin.com

**SWISS QUALITY FOR YOU** 

